

Avinashilingam Institute for Home Science and Higher Education for Women
Deemed to be University Estd. u/s 3 of UGC Act 1956, Category A by MHRD (now MoE)
Re-accredited with A++ Grade by NAAC. CGPA 3.65 /4, Category I by UGC
Coimbatore - 641 043, Tamil Nadu, India

Continuous Internal Assessment Test I- August - 2025
SEMESTER I

Class :I SPL B.Ed (Visual Impairment)

Time: 2 Hrs.

Max. Marks: 60

25BDSSVI- Specialization – Identification of Children with Visual Impairment and Assessment Needs

Course Outcomes:

- CO1: Describe the anatomy and physiology of vision and the concept of visual impairment.
CO2: Discuss the common eye disorders and their educational implications.
CO3: Examine the implications of the visual impairment for development.
CO4: Make use of results of psychological assessments in educational setting.
CO5: Manage the additional disabilities in children with visual impairments in educational setting.

PART – A

6 x 1 = 6

Answer All questions

Choose the correct answer

1. What is the transparent outer part of the eye? CO 1 K1
a. Cornea b. Iris c. Lens d. macula
2. Identify which part of the human eye is responsible for controlling the amount of light entering the eye. CO 1 K1
a. Retina b. Cornea c. Lens d. Iris
3. What is the primary purpose of a clinical assessment of vision? CO2 K2
a. To prescribe eye glasses b. To assess of an Individuals visual skills
c. To diagnosis visual impairment d. To evaluate psychological well-being
4. What are some psychological implications often associated with visual impairment? CO2 K1
a. Improved self esteem b. Decreased independence
c. Enhanced social skills d. Accelerated cognitive development
5. Xerophthalmia caused by lack of CO3 K1
a. VIT A b. VIT B c. VIT C d. VIT D
6. Defect with which children are born visual impairment are known as CO3 K2
a. Acquired Blindness b. Congenital Blindness c. Natural Impairment d. None of the above

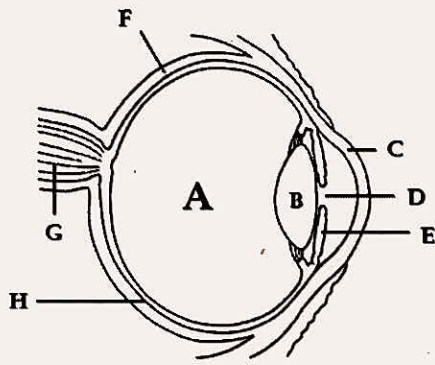
PART – B

3 x 6 = 18

Answer ALL questions

Answer should not exceed 400 words or two pages

7. a. Label the parts and writes its functions. CO1 K3



- | | | | |
|-------|--------------------------------------------------------------------------|-----|----|
| 7. b. | Define : Visual Acuity, Visual Field and Contrast Sensitivity | CO1 | K2 |
| 8. a. | Explain the types of Refractive error and explain one with illustration. | CO2 | K2 |
| | (or) | | |
| 8. b. | Write a note on Cataract and Glaucoma | CO2 | K3 |
| 9. a. | Define Blindness. | CO3 | K3 |
| | (or) | | |
| 9. b. | Define Low Vision | CO3 | K4 |

PART – C

3 x 12 = 36

Answer ALL questions

Answer should not exceed 800 words or four pages

- | | | | |
|--------|-----------------------------------------------------------------------------------------------------------------------------------------------------------|-----|----|
| 10. a. | Draw a structure of an Eye and explain its process of seeing. | CO1 | K3 |
| | (or) | | |
| 10. b. | Describe visual Development Millstones. | CO1 | K3 |
| 11. a. | Describe Elements of vision. | CO2 | K2 |
| | (or) | | |
| 11. b. | Explain the different types of Strabismus with illustration. | CO2 | K4 |
| 12. a. | Suggest an educational program aimed at preventing Vitamin A Deficiency in the community. Discuss the key components of it | CO3 | K5 |
| | (or) | | |
| 12. b. | Assess the significance of regular eye checkups in detecting and preventing common eye conditions like refractive errors among children at primary stage. | CO3 | K5 |

Staff In-charge: Dr.S.Revathi

No. of copies: 7